

TORNADO & SEVERE THUNDERSTORM

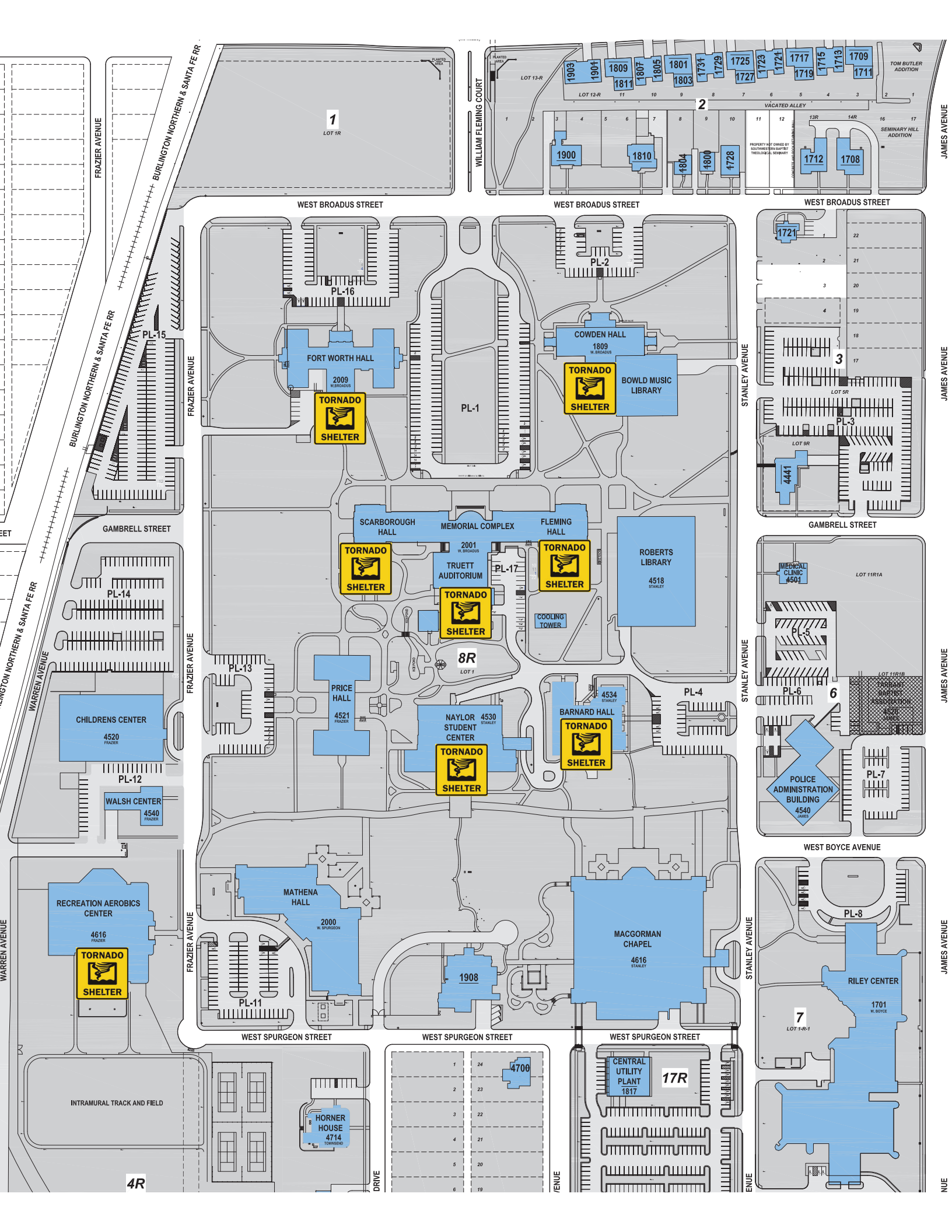
“WATCH”

A tornado or severe thunderstorm watch means conditions are right for a tornado or severe thunderstorm to develop. Continue normal activities but also continue to monitor the situation.

“WARNING”

A tornado or severe thunderstorm warning means that a tornado or severe thunderstorm has been spotted or picked up on radar. The below guidelines should be followed in the event of a tornado or severe thunderstorm warning:

- Notify building occupants of the severe weather warning.
- If it is a thunderstorm warning, you should stay indoors and away from windows until the storm passes. Report injuries/damage to Campus Police at (817) 921-8888.
- If it is a tornado warning, you should seek shelter in the basement or lowest level of the building or a small interior room/hallway on the lower floor. If you are in a vehicle, get out and seek shelter in a sturdy building. If a building is not available, a depression such as a ditch or ravine offers some protection. Avoid areas with windows and exterior doors.
- Campus Tornado Shelter Maps are located on the SWBTS Campus Police webpage under Emergency Procedures.
- After danger has passed, immediately report injuries/damage to Campus Police at (817) 921-8888.
- Immediately exit a badly damaged building and do not attempt to return to the building unless directed to do so by Campus Police or the local emergency response units.
- Do not attempt to turn utilities or equipment on or off. Call Campus Police at (817) 921-8888 or the Facilities Department at (817) 921-8454.








EMERGENCY ESCAPE PLAN

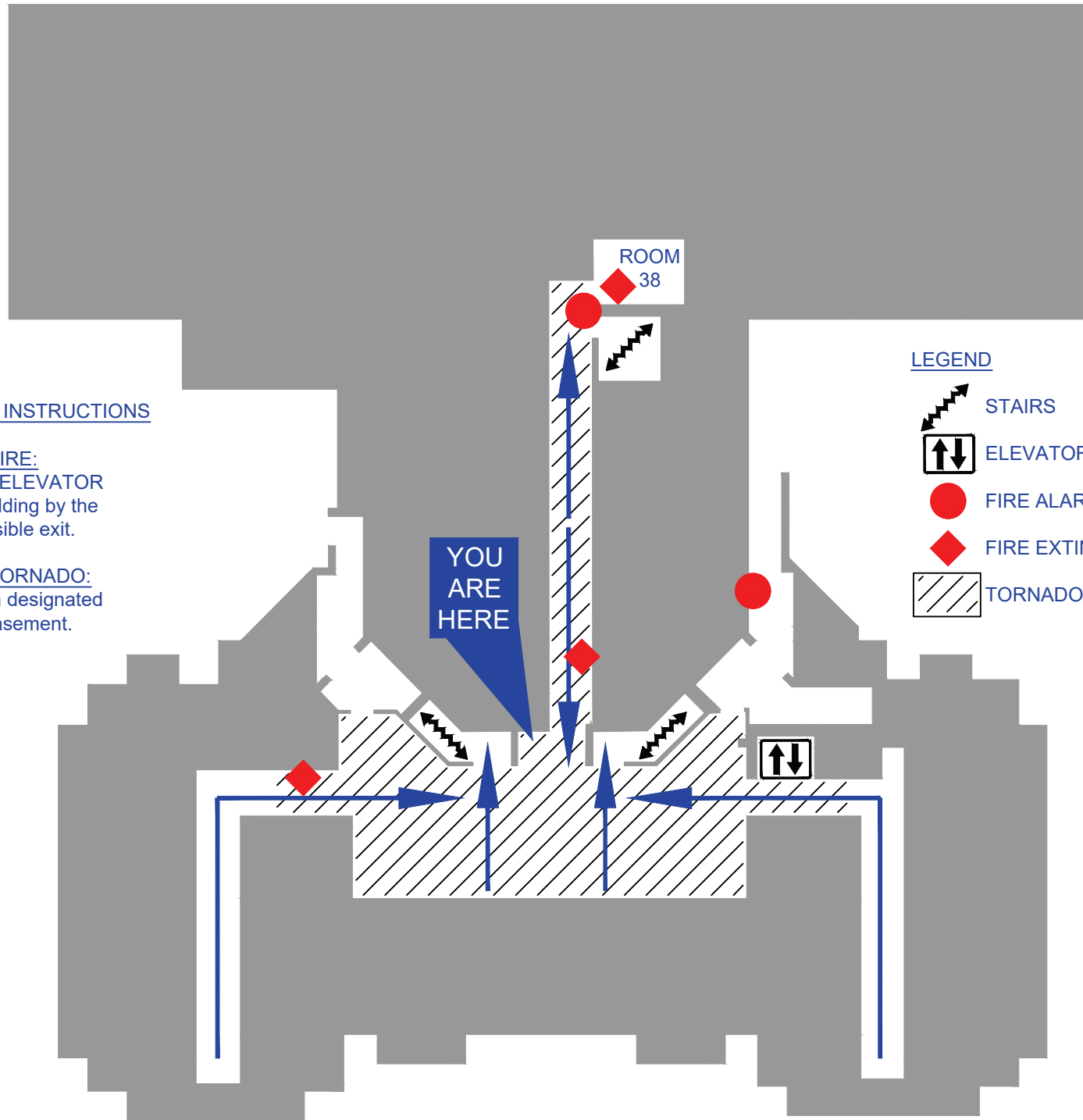
EMERGENCY INSTRUCTIONS

IN CASE OF FIRE:
DO NOT USE ELEVATOR
Vacate the building by the nearest accessible exit.

IN CASE OF TORNADO:
Seek shelter in designated areas of the basement.

LEGEND

-  STAIRS
-  ELEVATOR
-  FIRE ALARM PULL STATION
-  FIRE EXTINGUISHER
-  TORNADO SHELTER



BARNARD HALL BASEMENT





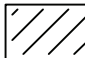
EMERGENCY ESCAPE PLAN

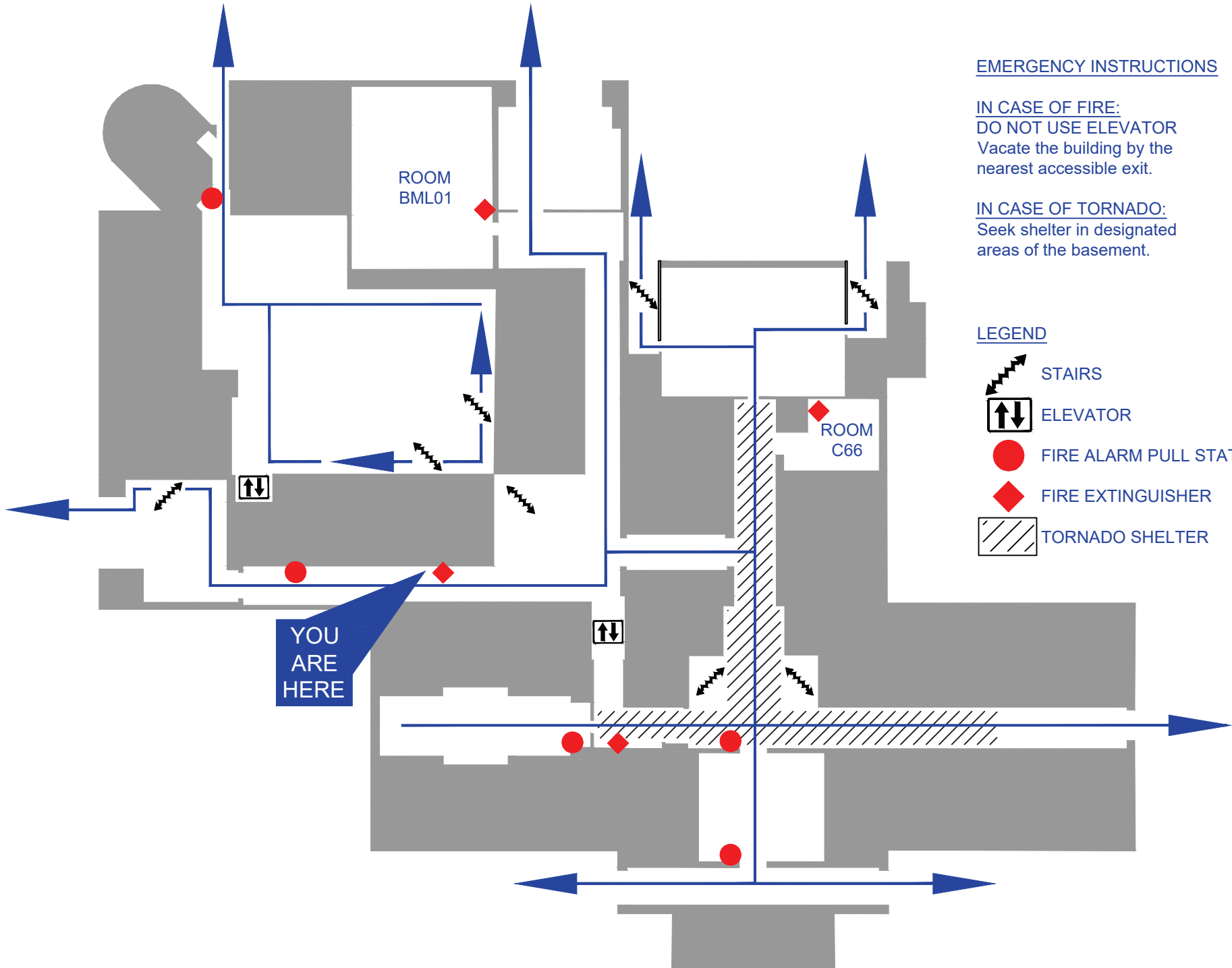
EMERGENCY INSTRUCTIONS

IN CASE OF FIRE:
DO NOT USE ELEVATOR
Vacate the building by the nearest accessible exit.

IN CASE OF TORNADO:
Seek shelter in designated areas of the basement.

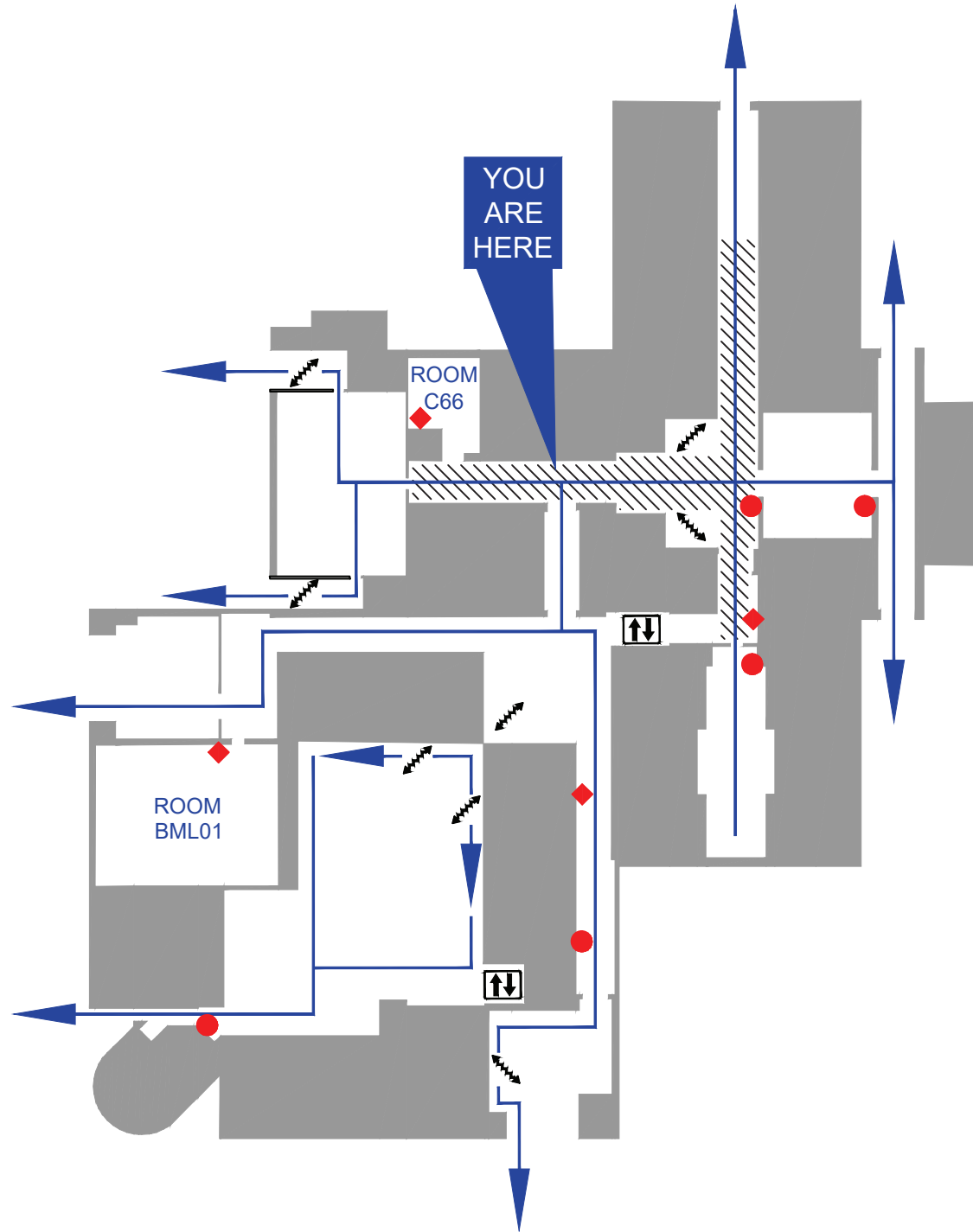
LEGEND

-  STAIRS
-  ELEVATOR
-  FIRE ALARM PULL STATION
-  FIRE EXTINGUISHER
-  TORNADO SHELTER



COWDEN HALL/BOWLD MUSIC LIBRARY GROUND LEVEL

EMERGENCY ESCAPE PLAN



EMERGENCY INSTRUCTIONS

IN CASE OF FIRE:
DO NOT USE ELEVATOR
Vacate the building by the nearest accessible exit.

IN CASE OF TORNADO:
Seek shelter in designated areas of the basement.

LEGEND

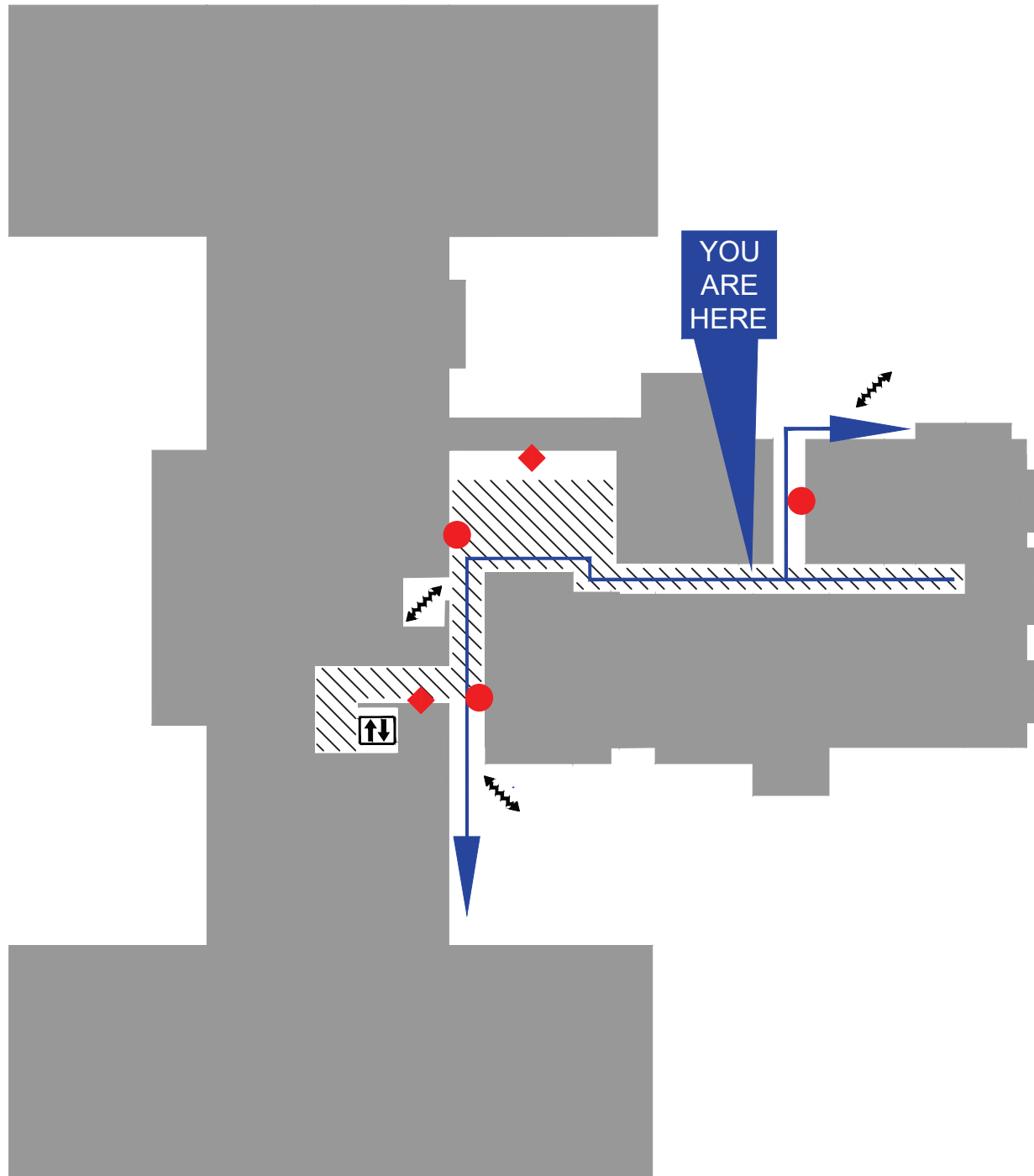
-  STAIRS
-  ELEVATOR
-  FIRE ALARM PULL STATION
-  FIRE EXTINGUISHER
-  TORNADO SHELTER

EMERGENCY ESCAPE PLAN






EMERGENCY INSTRUCTIONS

IN CASE OF FIRE:
DO NOT USE ELEVATOR
Vacate the building by the
nearest accessible exit.

IN CASE OF TORNADO:
Seek shelter in designated
areas of the basement.



LEGEND

-  STAIRS
-  ELEVATOR
-  FIRE ALARM PULL STATION
-  FIRE EXTINGUISHER
-  TORNADO SHELTER

FORT WORTH HALL BASEMENT LEVEL

EMERGENCY ESCAPE PLAN

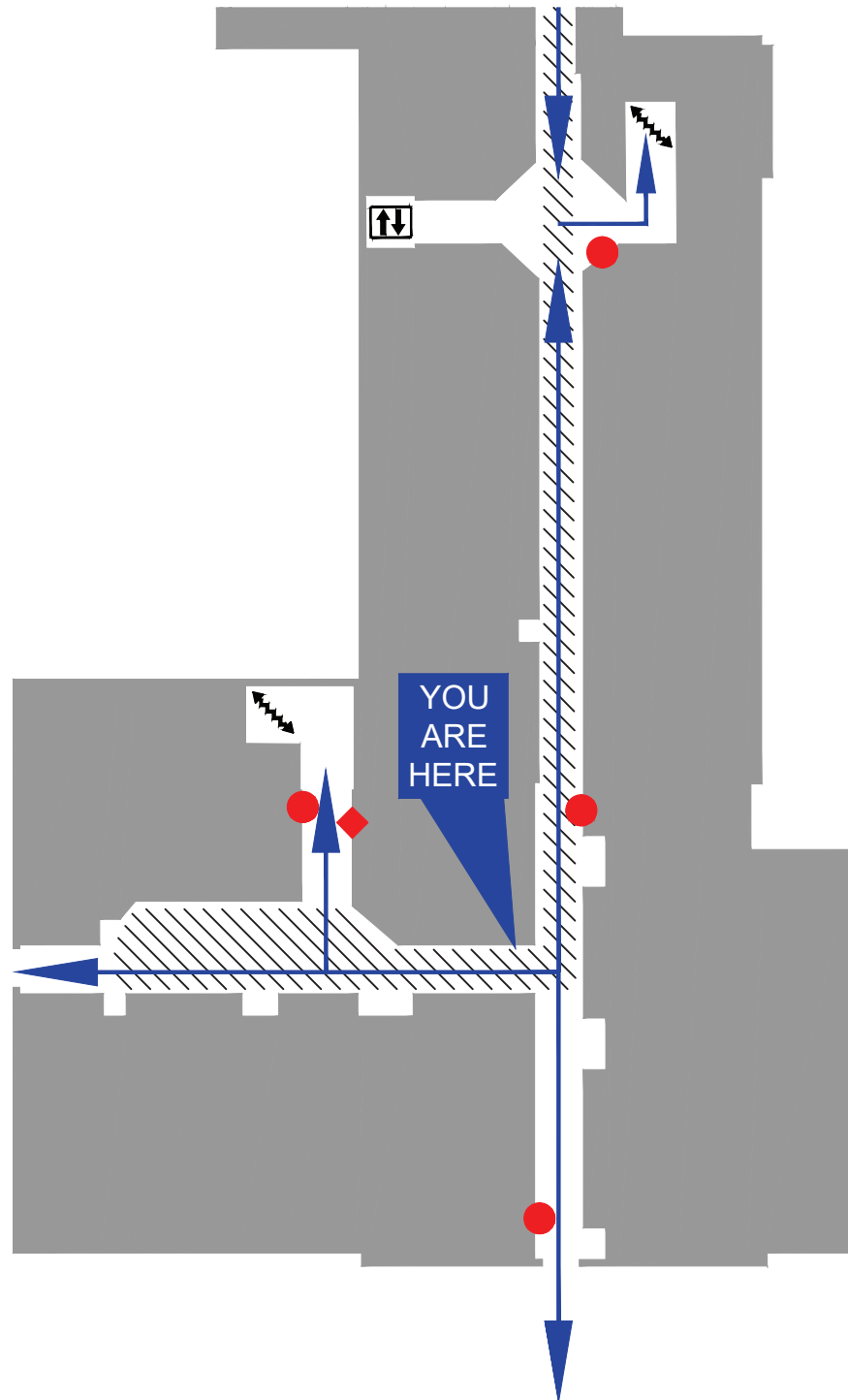
EMERGENCY INSTRUCTIONS

IN CASE OF FIRE:
DO NOT USE ELEVATOR
Vacate the building by the
nearest accessible exit.

IN CASE OF TORNADO:
Seek shelter in designated
areas of the basement.

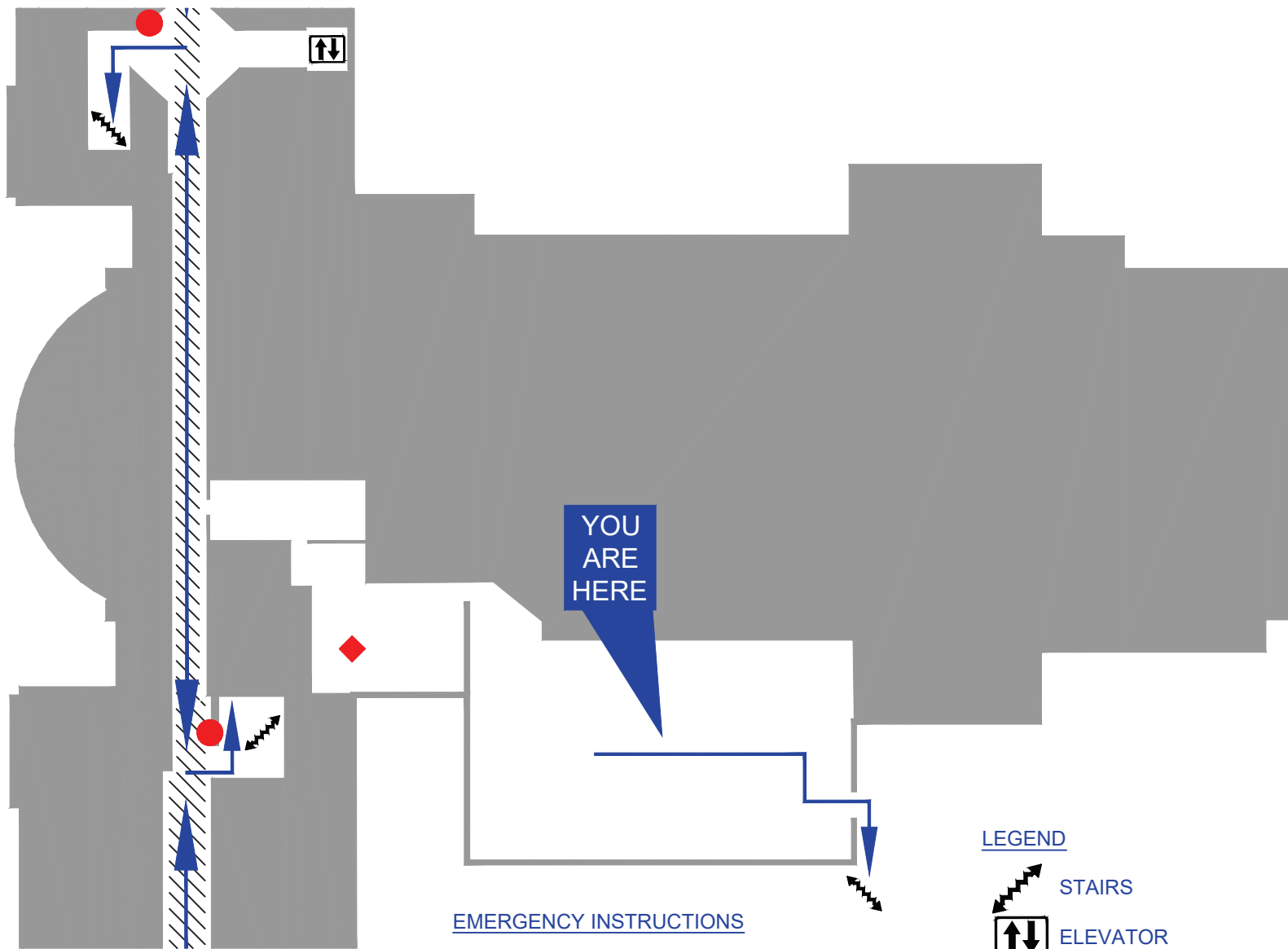
LEGEND

-  STAIRS
-  ELEVATOR
-  FIRE ALARM PULL STATION
-  FIRE EXTINGUISHER
-  TORNADO SHELTER



FLEMING HALL BASEMENT

EMERGENCY ESCAPE PLAN








YOU ARE HERE

EMERGENCY INSTRUCTIONS

IN CASE OF FIRE:
DO NOT USE ELEVATOR
Vacate the building by the
nearest accessible exit.

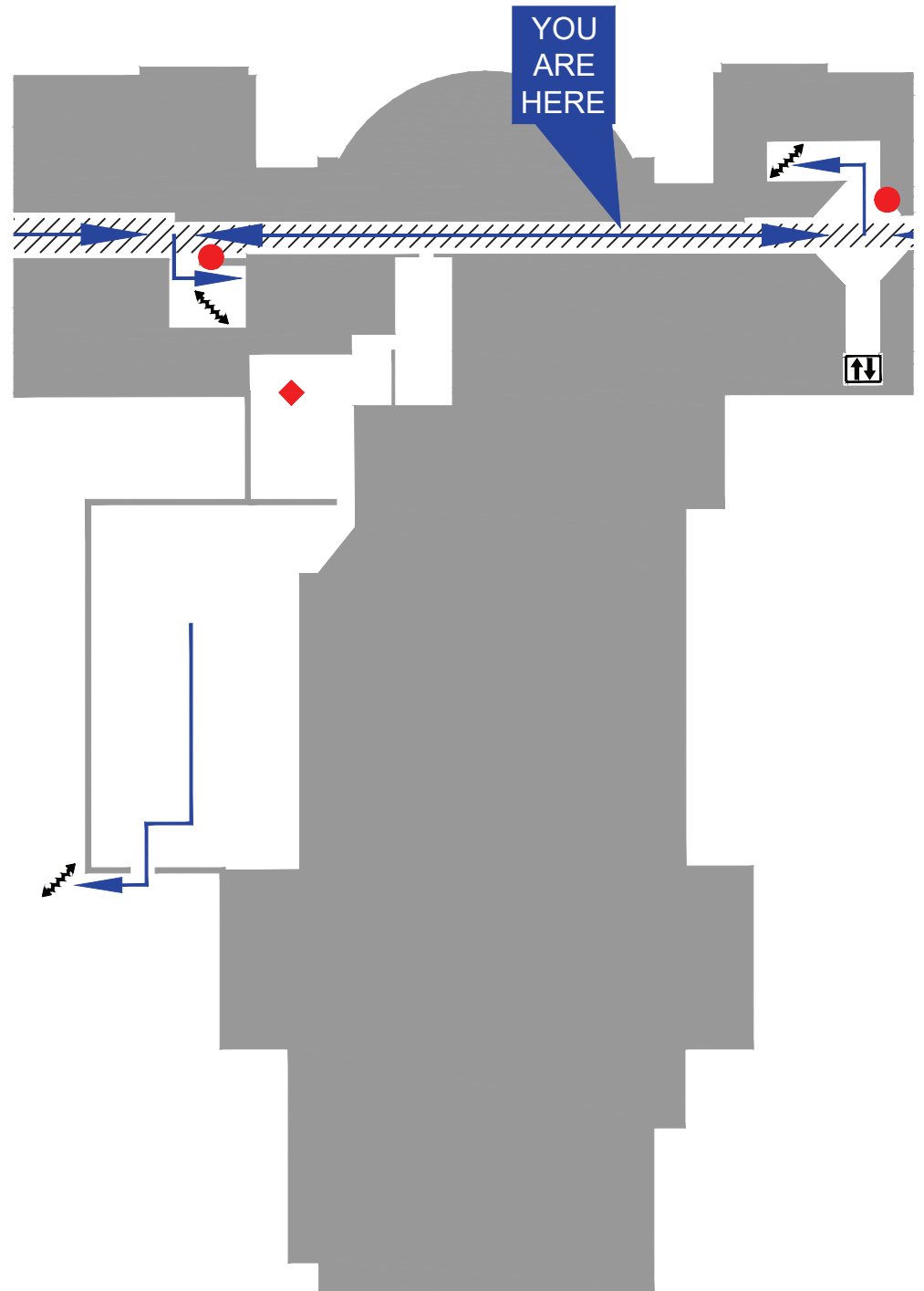
IN CASE OF TORNADO:
Seek shelter in designated
areas of the basement.

LEGEND

-  STAIRS
-  ELEVATOR
-  FIRE ALARM PULL STATION
-  FIRE EXTINGUISHER
-  TORNADO SHELTER

TRUETT AUDITORIUM BASEMENT

EMERGENCY ESCAPE PLAN








EMERGENCY INSTRUCTIONS

IN CASE OF FIRE:
DO NOT USE ELEVATOR
Vacate the building by the
nearest accessible exit.

IN CASE OF TORNADO:
Seek shelter in designated
areas of the basement.

LEGEND

-  STAIRS
-  ELEVATOR
-  FIRE ALARM PULL STATION
-  FIRE EXTINGUISHER
-  TORNADO SHELTER

EMERGENCY ESCAPE PLAN

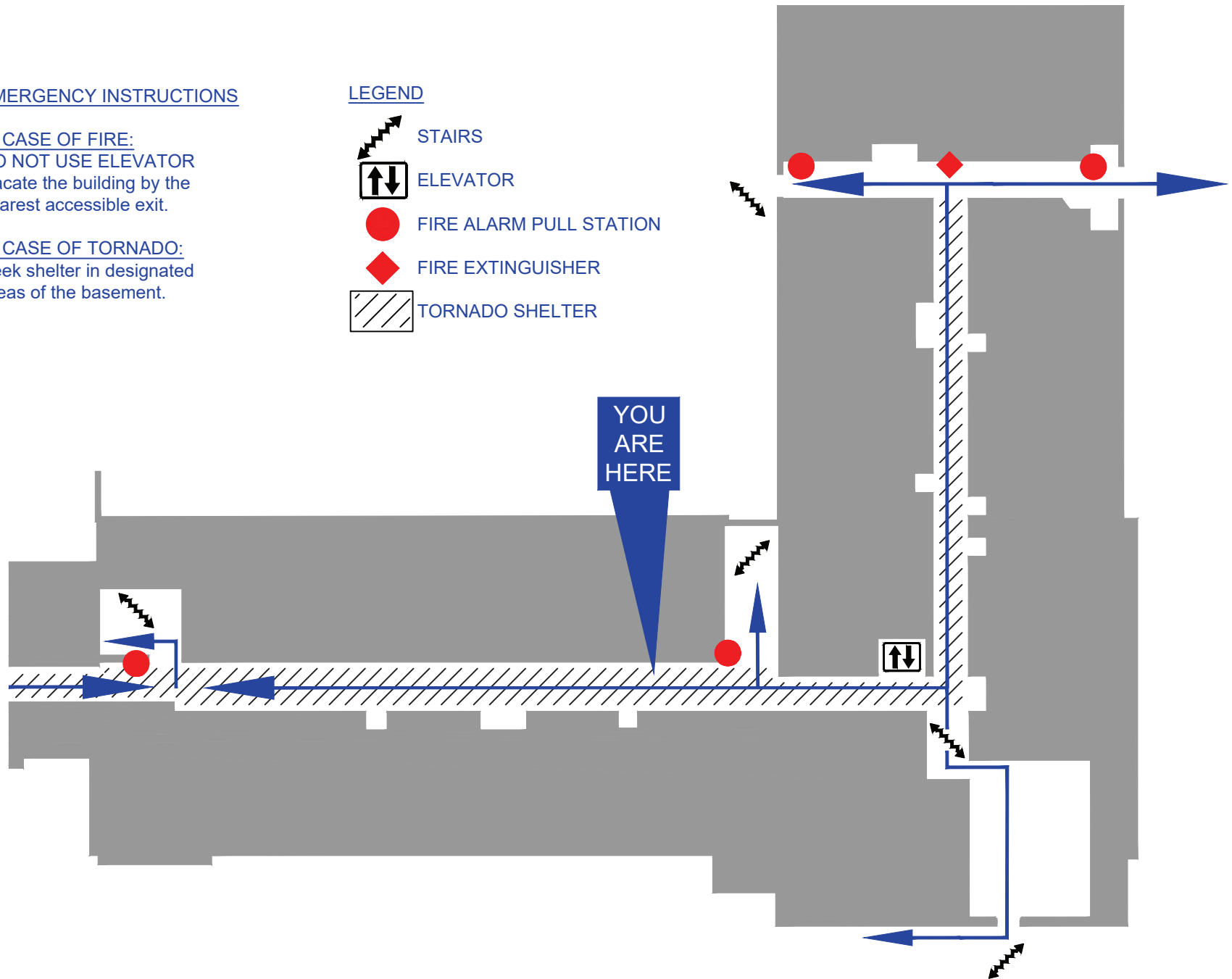
EMERGENCY INSTRUCTIONS

IN CASE OF FIRE:
DO NOT USE ELEVATOR
Vacate the building by the nearest accessible exit.

IN CASE OF TORNADO:
Seek shelter in designated areas of the basement.

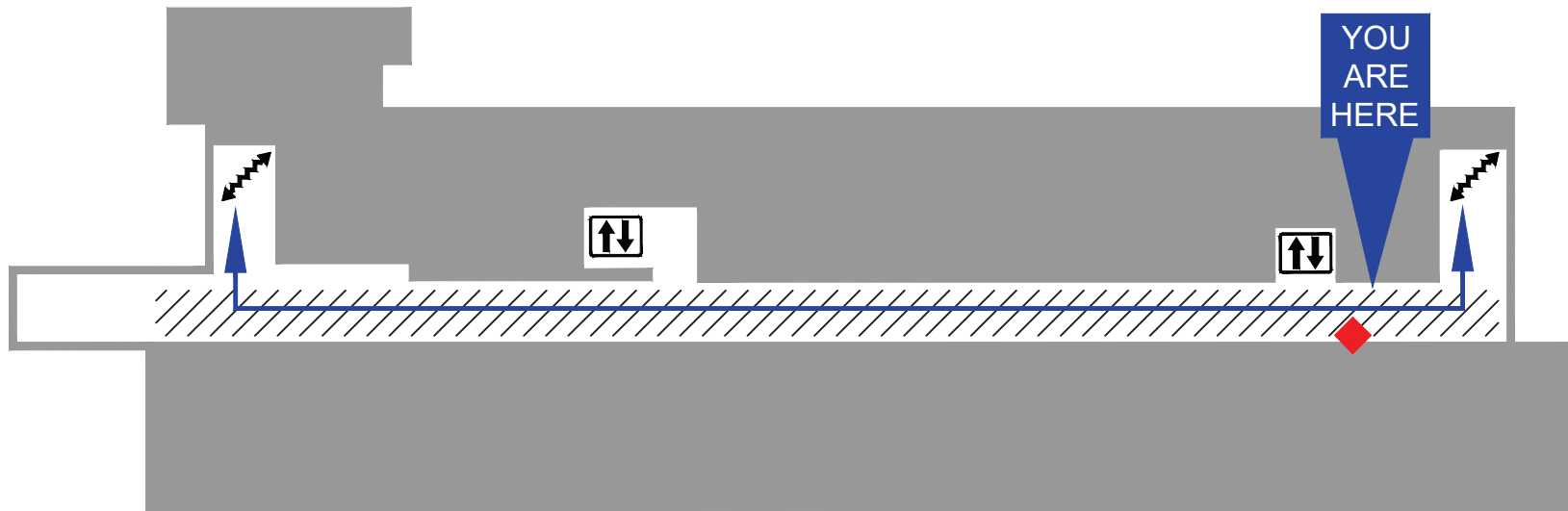
LEGEND

-  STAIRS
-  ELEVATOR
-  FIRE ALARM PULL STATION
-  FIRE EXTINGUISHER
-  TORNADO SHELTER



SCARBOROUGH HALL BASEMENT

EMERGENCY ESCAPE PLAN



EMERGENCY INSTRUCTIONS

IN CASE OF FIRE:
DO NOT USE ELEVATOR
Vacate the building by the
nearest accessible exit.





IN CASE OF TORNADO:
Seek shelter in designated
areas of the basement.

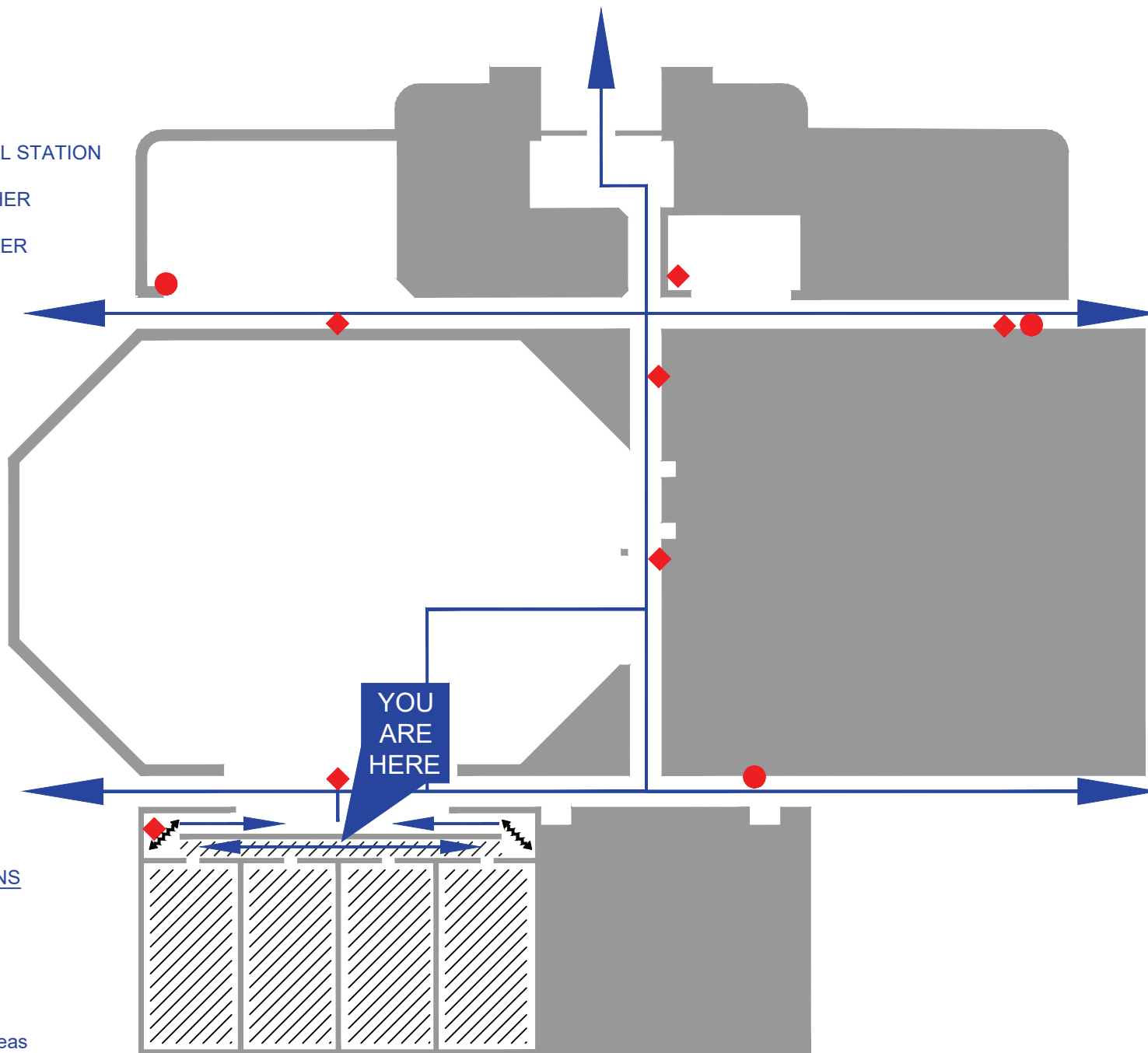
LEGEND

-  STAIRS
-  ELEVATOR
-  FIRE EXTINGUISHER
-  TORNADO SHELTER

EMERGENCY ESCAPE PLAN

LEGEND

-  STAIRS
-  FIRE ALARM PULL STATION
-  FIRE EXTINGUISHER
-  TORNADO SHELTER



EMERGENCY INSTRUCTIONS

IN CASE OF FIRE:

Vacate the building by the nearest accessible exit.

IN CASE OF TORNADO:

Seek shelter in designated areas